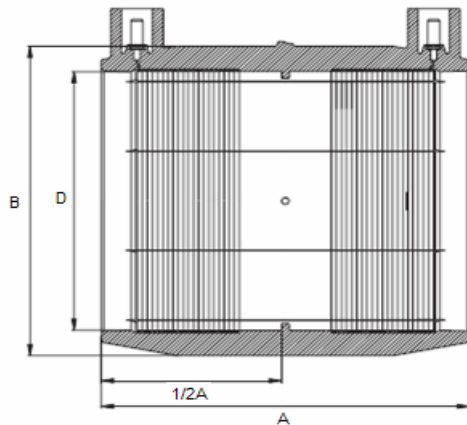


EF COUPLER PE100 SDR11



SIZE (mm)	CODE	A (mm)	B (mm)	FUSE TIME (s)	COOL TIME (min)	WEIGHT [kg]	ITEMS IN BOX
20	ME 20	85	36	25	10	0,068	200
25	ME 25	85	36	25	10	0,055	200
32	ME 32	74	44	50	10	0,071	150
40	ME 40	87	57	40	10	0,123	100
50	ME 50	87	67	70	10	0,151	80
63	ME 63	111	82	130	10	0,238	40
75	ME 75	127	100	70	15	0,501	20
90	ME 90	132	115	110	15	0,602	18
110	ME 110	156	138	170	15	0,742	12
125	ME 125	VI 2007					
140	ME 140	180	170	250	30	1,2	7
160	ME 160	180	190	330	30	1,796	6
180	ME 180	VI 2007					
200	ME 200	VI 2007					
225	ME 225	VI 2007					

* EF - electro fusion

Pin connectors are 4.0mm (4.7 on request)

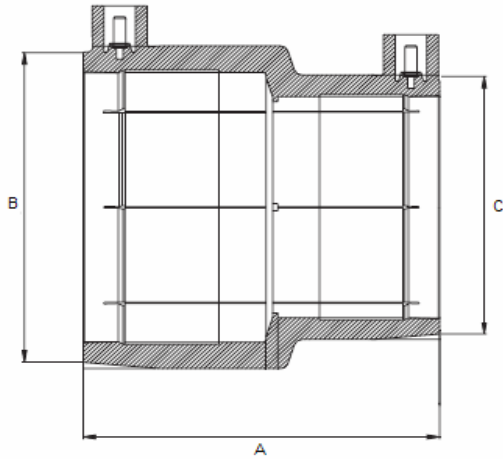
All products are made of black polyethylene HDPE PE 100, (MDPE PE 80 - yellow also available)

Our products fully comply the requirements of specified norms:

EN 1555-3:2003 Plastics piping systems for the supply of gaseous fuels - Polyethylene (PE) - Part 3: Fittings

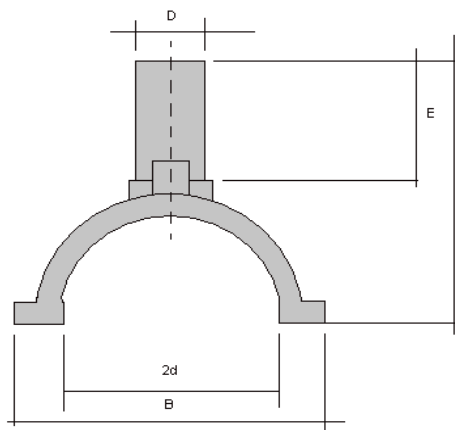
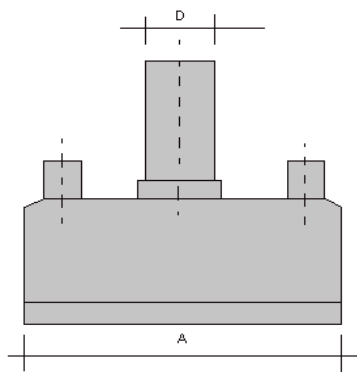
EN 12201-3:2003 Plastics piping systems for water supply - Polyethylene (PE) - Part 3: Fittings

EF REDUCER PE100 SDR11



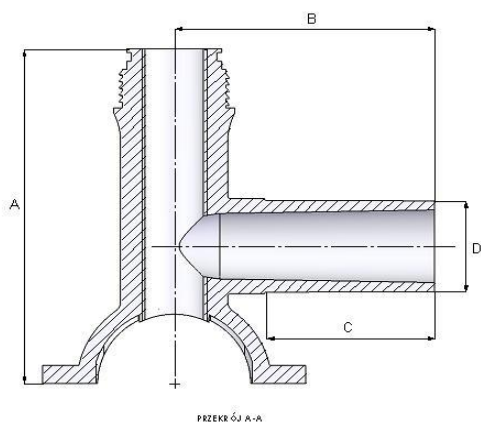
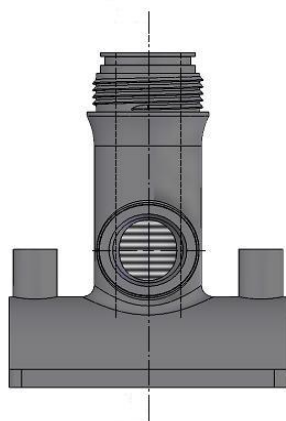
SIZE (mm)	CODE	A (mm)	B (mm)	C (mm)	FUSE TIME (s)	COOL TIME (min)	WEIGHT [kg]	ITEMS IN BOX
25/20	RE 25/20	85	36	36	25	10	0,06	200
32/20	RE 32/20	74	44	36	35	10	0,064	150
32/25	RE 32/25	74	44	36	35	10	0,068	150
40/25	RE 40/25	86	57	37	40	10	0,101	100
40/32	RE 40/32	86	57	46	40	10	0,107	100
50/25	RE 50/25	87	67	37	40	10	0,134	80
50/32	RE 50/32	87	67	46	50	10	0,125	80
50/40	RE 50/40	87	67	57	50	10	0,14	80
63/32	RE 63/32	112	81	46	80	10	0,186	40
63/40	RE 63/40	110	81	58	100	10	0,207	40
63/50	RE 63/50	112	81	65	100	10	0,202	40
75/63	RE 75/63	128	100	82	60	15	0,448	20
90/63	RE 90/63	128	115	82	65	15	0,515	20
90/75	RE 90/75	133	114	100	90	15	0,588	20
110/63	RE 110/63	168	140	82	90	15	0,82	14
110/75	RE 110/75	162	140	97	130	15	0,89	12
110/90	RE 110/90	165	140	115	140	15	0,927	12

EF BRANCH SADDLE PE100 SDR11



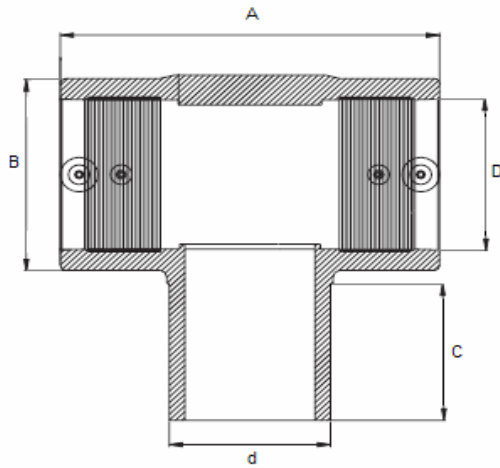
SIZE (mm)	CODE	A (mm)	B (mm)	C (mm)	E (mm)	FUSE TIME (s)	COOL TIME (min)	WEIGHT [KG]	ITEMS IN BOX
63/32	OE 63/32	114	105	103	42	90	15	0,316	30
75/32	OE 75/32	116	120	114	42	90	15	0,372	25
90/32	OE 90/32	116	133	123	42	90	15	0,421	20
110/32	OE 110/32	126	151	132	42	90	15	0,501	15
160/32	OE 160/32	129	215	165	42	90	15	0,781	10
90/63	OE 90/63	127	135	139	57	100	15	0,519	15
110/63	OE 110/63	127	155	147	57	100	15	0,595	15
160/63	OE 160/63	129	215	179	57	100	15	0,865	10

EF TAPPING TEE PE100 SDR11



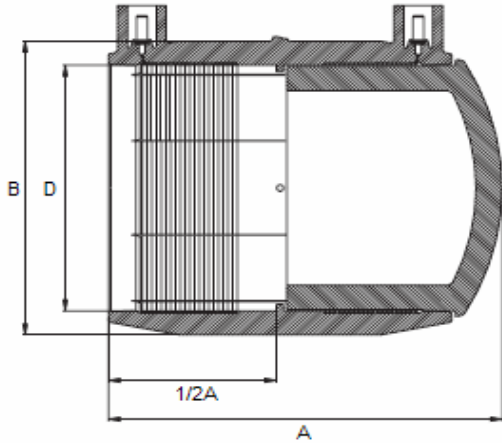
SIZE (mm)	CODE	A (mm)	B (mm)	C (mm)	D (mm)	FUSE TIME (s)	COOL TIME (min)	WEIGHT [KG]	ITEMS IN BOX
63/20	TS 63/20	VII 2007							
63/25	TS 63/25	VII 2007							
63/32	TS 63/32	148	107	69	32	90	15	0,53	15
63/40	TS 63/40	148	107	69	40	90	15	0,55	15
90/20	TS 90/20	VIII 2007							
90/25	TS 90/25	VIII 2007							
90/32	TS 90/32	VIII 2007							
90/40	TS 90/40	VIII 2007							
110/20	TS 110/20	VII 2007							
110/25	TS 110/25	VII 2007							
110/32	TS 110/32	172,5	107	70	32	90	15	0,795	10
110/40	TS 110/40	172,5	107	70	40	90	15	0,795	10

EF TEE PE100 SDR11



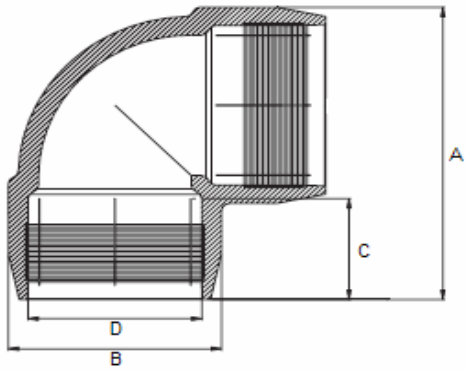
SIZE D/d (mm)	CODE	A (mm)	B (mm)	C (mm)	FUSE TIME (s)	COOL TIME (min)	WEIGHT [KG]	ITEMS IN BOX
25/25	TE 25	107	37	41	27	10	0,086	100
32/25	TE 32/25	107	45	59	50	10	0,107	70
32/32	TE 32/25	107	45	44	50	10	0,118	70
40/25	TE 40/25	106	57	59	40	10	0,169	60
40/32	TE 40/32	106	57	35	40	10	0,171	50
40/40	TE 40	107	57	45	40	10	0,175	50
50/32	TE 50/32	155	67	35	70	10	0,291	30
50/40	TE 50/40	155	67	45	70	10	0,3	25
50/50	TE 50	155	67	58	70	10	0,314	25
63/32	TE 63/32	155	81	50	130	10	0,378	20
63/40	TE 63/40	155	81	45	130	10	0,4	20
63/50	TE 63/50	155	81	58	130	10	0,4	18
63/63	TE 63	155	81	50	130	10	0,409	18

EF END CAP PE100 SDR11



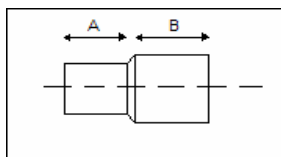
SIZE (mm)	CODE	A (mm)	B (mm)	FUSE TIME (s)	COOL TIME (min)	WEIGHT [KG]	ITEMS IN BOX
20	ZE 20	90	36	25	10	0,071	200
25	ZE 25	90	36	25	10	0,068	200
32	ZE 32	79	44	50	10	0,09	150
40	ZE 40	93	57	40	10	0,152	100
50	ZE 50	95	67	70	10	0,194	70
63	ZE 63	119	82	130	10	0,315	40
75	ZE 75	136	100	70	15	0,626	20
90	ZE 90	142	115	110	15	0,789	18
110	ZE 110	177	141	170	15	1,351	12
160	ZE 160	195	190	330	30	2,796	6

EF ELBOW 90° PE100 SDR11



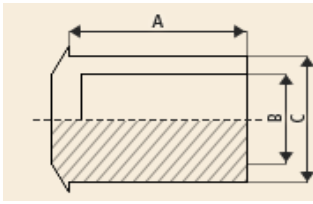
SIZE (mm)	CODE	A (mm)	B (mm)	C (mm)	FUSE TIME (s)	COOL TIME (min)	WEIGHT [KG]	ITEMS IN BOX
32	KE 32	84	45	39	50	10	0,091	100
40	KE 40	102	58	44	40	10	0,178	50
50	KE 50	110	67	43	70	10	0,23	35
63	KE 63	131	49	82	130	10	0,338	20
90	KE 90	III 2007			110	15	0,601	
110	KE 110	200	135	65	180	15	1,195	8

REDUCER SPIGOT PE 100 SDR 11



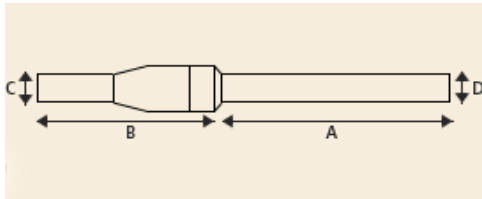
SIZE (mm)	CODE	A (mm)	B (mm)	WEIGHT [KG]	ITEMS IN BOX
75/63	RD 75/63	62	67	0,189	35
90/63	RD 90/63	76	86	0,268	35
90/75	RD 90/75	76	86	0,29	30
110/63	RD 110/63	67	83	0,401	24
110/75	RD 110/75	65	83	0,411	24
110/90	RD 110/90	73	83	0,461	20

CAP SPIGOT PE100 SDR11



SIZE (mm)	CODE	A (mm)	B (mm)	C (mm)	WEIGHT [KG]	ITEMS IN BOX
75	ZD 75	59	61	75	0,128	60
90	ZD 90	63	73	90	0,184	50
110	ZD 110	80	90	110	0,313	30
160	ZD 160	90	145	160	0,95	27

PE/STEEL PE100



SIZE (mm)	CODE	A (mm)	B (mm)	C (mm)	D (mm)	WEIGHT [kg]	ITEMS IN BOX
25/20	PE/STEEL 25/20	205	150	25,1	26,9	0,451	75
32/25	PE/STEEL 32/25	IV 2007					

STEEL VALVE CAP Ø 15



SIZE (mm)	CODE	WEIGHT [kg]	ITEMS IN BOX
3/4"	korek 3/4	0,005	2000