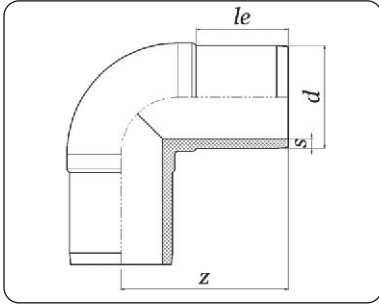
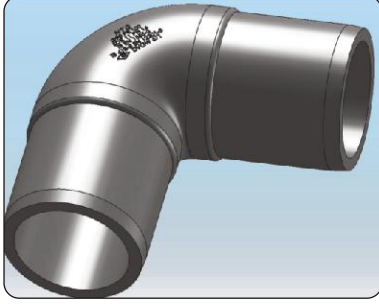


90° Dirsek

90° Elbow Spigot



PE 100

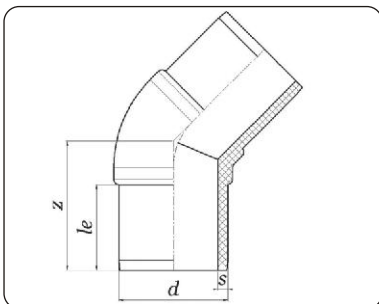
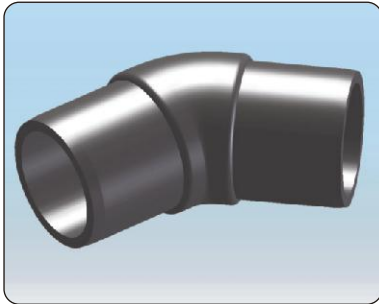
SDR 11 / S 5

PN 16

d mm	parça kodu item code	le mm	z mm	s mm	ağırlık weight kg
20	01.117.021.0020	52,0	75,0	3,0	0,027
25	01.117.021.0025	52,0	80,0	3,0	0,037
32	01.117.021.0032	54,0	85,0	3,0	0,053
40	01.117.021.0040	57,0	95,0	3,7	0,092
50	01.117.021.0050	63,0	105,0	4,6	0,159
63	01.117.021.0063	65,0	115,0	5,8	0,275
75	01.117.021.0075	72,0	130,0	6,8	0,412
90	01.117.021.0090	81,0	150,0	8,2	0,704
110	01.117.021.0110	86,0	165,0	10,0	1,162
125	01.117.021.0125	93,0	180,0	11,4	1,609
140	01.117.021.0140	96,0	190,0	12,7	1,750
160	01.117.021.0160	103,0	210,0	14,6	3,100
180	01.117.021.0180	107,0	232,0	16,4	4,319
200	01.117.021.0200	117,0	253,0	18,2	5,700
225	01.117.021.0225	122,0	270,0	20,5	7,780
250	01.117.021.0250	180,0	307,0	22,7	9,500
280	01.117.021.0280	200,0	340,0	25,4	13,182
315	01.117.021.0315	210,0	370,0	28,6	17,830

45° Dirsek

45° Elbow Spigot



PE 100

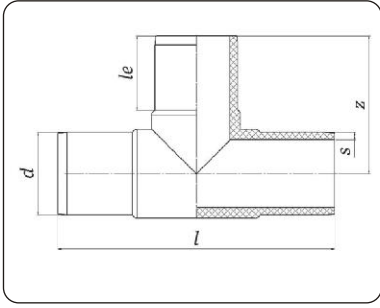
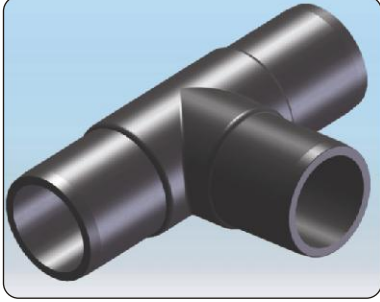
SDR 11 / S 5

PN 16

d mm	parça kodu item code	le mm	z mm	s mm	ağırlık weight kg
20	01.117.022.0020	52,0	50,0	3,0	0,027
25	01.117.022.0025	52,0	67,0	3,0	0,037
32	01.117.022.0032	54,0	80,0	3,0	0,051
40	01.117.022.0040	57,0	85,0	3,7	0,082
50	01.117.022.0050	63,0	90,0	4,6	0,137
63	01.117.022.0063	65,0	95,0	5,8	0,300
75	01.117.022.0075	72,0	105,0	6,8	0,346
90	01.117.022.0090	81,0	120,0	8,2	0,558
110	01.117.022.0110	86,0	130,0	10,0	0,931
125	01.117.022.0125	93,0	140,0	11,4	1,286
140	01.117.022.0140	96,0	150,0	12,7	1,425
160	01.117.022.0160	103,0	160,0	14,6	2,461
180	01.117.022.0180	107,0	170,0	16,4	3,283
200	01.117.022.0200	117,0	185,0	18,2	4,371
225	01.117.022.0225	122,0	200,0	20,5	5,930
250	01.117.022.0250	180,0	217,0	22,7	6,783
280	01.117.022.0280	200,0	238,0	25,4	9,300
315	01.117.022.0315	210,0	256,0	28,6	12,300

Eşit Tee

Tee equal
Spigot



PE 100

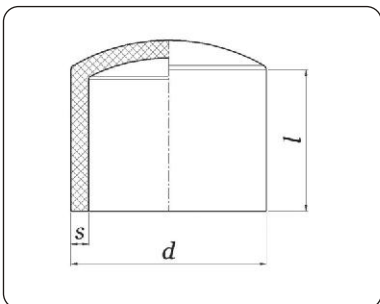
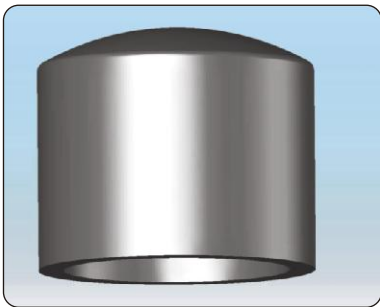
SDR 11 / S 5

PN 16

d mm	parça kodu item code	l mm	le mm	z mm	s mm	ağırlık weight kg
20	01.117.041.0020	107,0	52,0	54,0	3,0	0,038
25	01.117.041.0025	117,0	52,0	59,0	3,0	0,054
32	01.117.041.0032	144,0	54,0	71,0	3,0	0,074
40	01.117.041.0040	168,0	57,0	84,0	3,7	0,127
50	01.117.041.0050	189,0	63,0	95,0	4,6	0,217
63	01.117.041.0063	224,0	65,0	112,0	5,8	0,375
75	01.117.041.0075	260,0	72,0	128,0	6,8	0,616
90	01.117.041.0090	286,0	81,0	143,0	8,2	1,031
110	01.117.041.0110	317,0	86,0	158,0	10,0	1,660
125	01.117.041.0125	353,0	93,0	174,0	11,4	2,215
140	01.117.041.0140	380,0	96,0	190,0	12,7	2,931
160	01.117.041.0160	408,0	103,0	202,0	14,6	4,320
180	01.117.041.0180	521,0	107,0	246,0	16,4	5,980
200	01.117.041.0200	493,0	117,0	260,0	18,2	7,760
225	01.117.041.0225	548,0	122,0	272,0	20,5	10,485
250	01.117.041.0250	622,0	180,0	310,0	22,7	14,605
280	01.117.041.0280	694,0	200,0	347,0	25,4	22,760
315	01.117.041.0315	754,0	210,0	375,0	28,6	29,920

Kör Tapa

End Cap
Spigot



PE 100

SDR 11 / S 5

PN 16

d mm	parça kodu item code	l mm	s mm	ağırlık weight kg
20	01.117.140.0020	36,0	3,0	0,009
25	01.117.140.0025	45,0	3,0	0,013
32	01.117.140.0032	46,0	3,0	0,017
40	01.117.140.0040	54,0	3,7	0,031
50	01.117.140.0050	58,0	4,6	0,050
63	01.117.140.0063	64,0	5,8	0,085
75	01.117.140.0075	70,0	6,8	0,145
90	01.117.140.0090	84,0	8,2	0,240
110	01.117.140.0110	98,0	10,0	0,387
125	01.117.140.0125	105,0	11,4	0,546
140	01.117.140.0140	144,0	12,7	0,835
160	01.117.140.0160	120,0	14,6	1,026
180	01.117.140.0180	128,0	16,4	1,369
200	01.117.140.0200	138,0	18,2	1,839
225	01.117.140.0225	148,0	20,5	2,500
250	01.117.140.0250	230,0	22,7	3,927
280	01.117.140.0280			
315	01.117.140.0315			

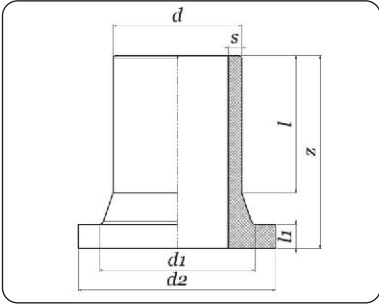
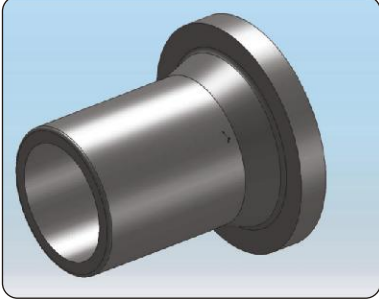
Flanş adaptörü

Flange adaptor
Spigot

PE 100

SDR 11 / S 5

PN 16



d mm	parça kodu item code	d1 mm	d2 mm	l mm	l1 mm	z mm	s mm	ağırlık weight kg
20	01.117.100.0020	27,0	45,0	64,0	7,0	89,0	3,0	0,027
25	01.117.100.0025	33,0	58,0	65,0	9,0	86,0	3,0	0,037
32	01.117.100.0032	42,0	68,0	54,0	10,0	80,0	3,0	0,051
40	01.117.100.0040	51,0	78,0	57,0	11,0	85,0	3,7	0,085
50	01.117.100.0050	61,0	88,0	63,0	12,0	92,0	4,6	0,126
63	01.117.100.0063	75,0	102,0	69,0	14,0	100,0	5,8	0,185
75	01.117.100.0075	89,0	122,0	87,0	16,0	120,0	6,8	0,305
90	01.117.100.0090	106,0	138,0	101,0	17,0	140,0	8,2	0,471
110	01.117.100.0110	126,0	158,0	120,0	18,0	160,0	10,0	0,722
125	01.117.100.0125	132,0	158,0	123,0	25,0	170,0	11,4	0,922
140	01.117.100.0140	155,0	188,0	130,0	25,0	191,0	12,7	1,319
160	01.117.100.0160	176,0	212,0	133,0	25,0	180,0	14,6	1,675
180	01.117.100.0180	180,0	212,0	160,0	30,0	190,0	16,4	1,986
200	01.117.100.0200	234,0	268,0	132,0	32,0	200,0	18,2	3,420
225	01.117.100.0225	235,0	268,0	138,0	32,0	200,0	20,5	4,987
250	01.117.100.0250	285,0	320,0	202,0	35,0	275,0	22,7	5,817
280	01.117.100.0280	291,0	320,0	302,0	35,0	377,0	25,4	8,493
315	01.117.100.0315	335,0	370,0	302,0	35,0	382,0	28,6	11,211
355	01.117.100.0355	370,0	430,0	165,0	40,0	255,0	32,2	12,300
400	01.117.100.0400	423,0	480,0	180,0	45,0	285,0	36,3	14,600

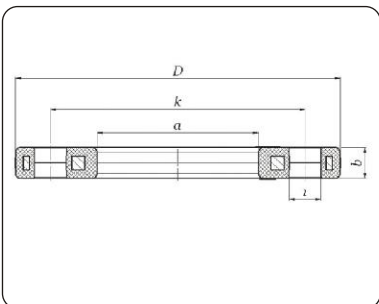
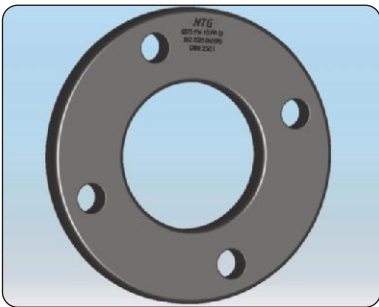
Flanş

Flange
PP with Steel Core

PP-St

SDR 17-SDR11/S8-S5

PN 10/16



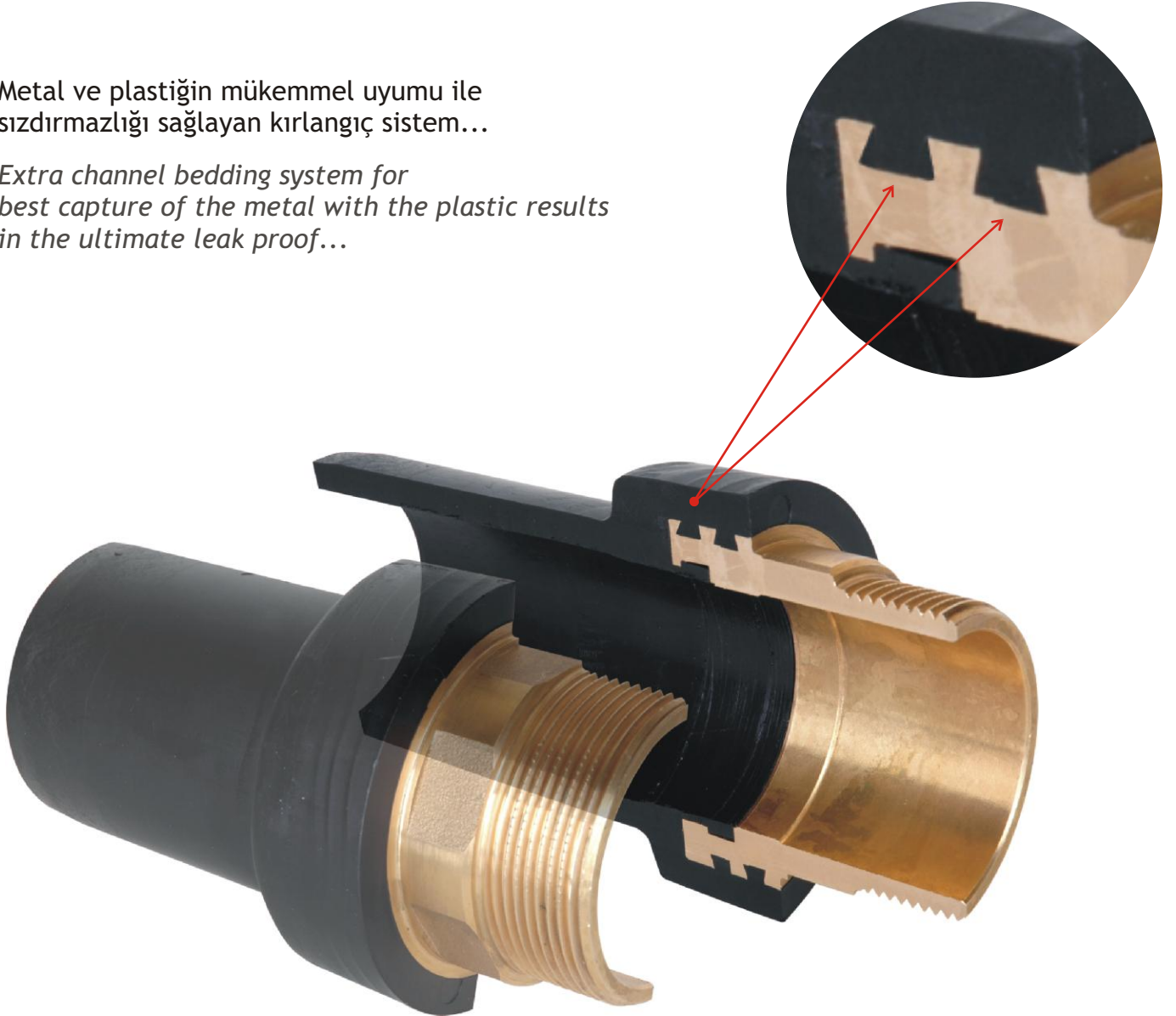
d mm	parça kodu item code	D mm	a mm	k mm	b mm	l mm	SC mm	ağırlık weight kg
25	05.115.120.0025	105,0	34,0	75,0	12,0	14,0	M12	
32	05.115.120.0032	115,0	42,0	85,0	16,0	14,0	M12	
40	05.115.120.0040	140,0	51,0	100,0	16,0	18,0	M16	
50	05.115.120.0050	150,0	62,0	110,0	18,0	18,0	M16	
63	05.115.120.0063	165,0	78,0	125,0	18,0	18,0	M16	
75	05.115.120.0075	185,0	92,0	145,0	18,0	18,0	M16	1,050
90	05.115.120.0090	200,0	108,0	160,0	20,0	18,0	M16	1,354
110	05.115.120.0110	220,0	128,0	180,0	20,0	18,0	M16	1,564
125	05.115.120.0125	220,0	135,0	180,0	20,0	18,0	M16	
140	05.115.120.0140	250,0	158,0	210,0	24,0	18,0	M16	
160	05.115.120.0160	285,0	178,0	240,0	24,0	22,0	M20	
180	05.115.120.0180	285,0	188,0	240,0	24,0	22,0	M20	
200	05.115.120.0200	340,0	235,0	295,0	27,0	22,0	M20	
225	05.115.120.0225	340,0	238,0	295,0	27,0	22,0	M20	
250	05.115.120.0250	395,0	288,0	350,0	30,0	22,0	M20	
280	05.115.120.0280	395,0	294,0	350,0	30,0	22,0	M20	
315	05.115.120.0315	445,0	338,0	400,0	34,0	22,0	M20	

Mükemmele ulařtıran detaylar!

The details enabling the perfection!

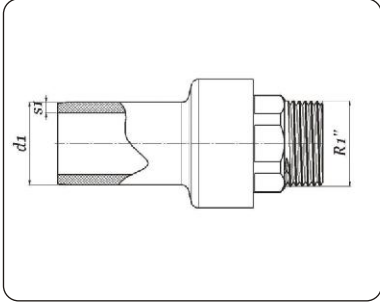
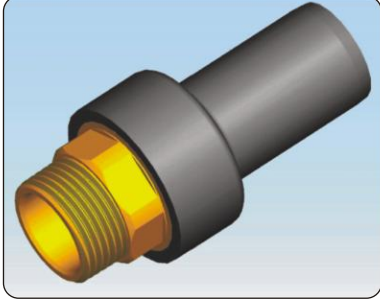
Metal ve plastiđin mükemmel uyumu ile sızdırmazlıđı sađlayan kırlanđıç sistem...

Extra channel bedding system for best capture of the metal with the plastic results in the ultimate leak proof...



Pe-Prinç geiş adaptörü

Pe-Brass transition fittings



PE 100

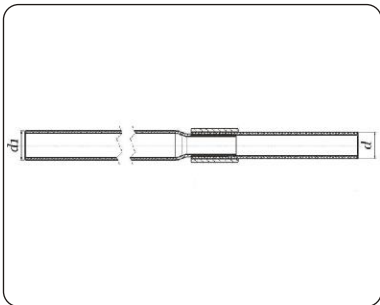
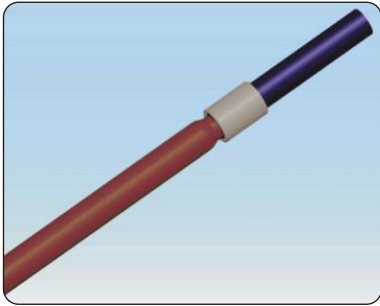
SDR 11 / S 5

PN 16

d mm	para kodu item code	d1 mm	d2 mm
20x1/2"	01.117.200.0020	20,0	1/2"
25x3/4"	01.117.200.0025	25,0	1/2"
32x1"	01.117.200.0032	32,0	1"
40x1 1/2"	01.117.200.0040	40,0	1 1/2"
50x1 1/2"	01.117.200.0050	50,0	1 1/2"
63x2"	01.117.200.0063	63,0	2"
75x2 1/2"	01.117.200.0075	75,0	2 1/2"
90x3"	01.117.200.0090	90,0	3"
110x4"	01.117.200.0110	110,0	4"

Pe-elik geiş adaptörü

Pe-Steel transition fittings



PE 100

SDR 11 / S 5

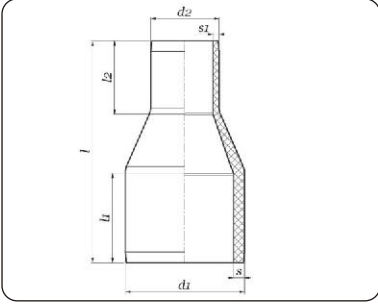
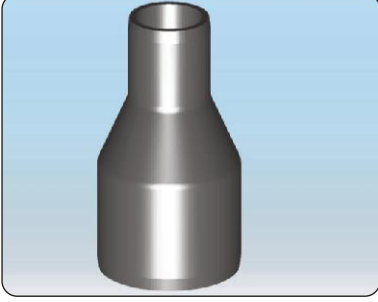
PN 16

d mm	para kodu item code	d1 mm	d2 mm
32x1"	01.117.180.3201	32,0	1"
63x2"	01.117.180.6302	63,0	2"
90x3"	01.117.180.9003	90,0	3"
110x4"	01.117.180.1104	110,0	4"
125x4"	01.117.180.1254	125,0	4"
125x6"	01.117.180.1256	125,0	6"
160x6"	01.117.180.1606	160,0	6"
180x6"	01.117.180.1806	180,0	6"
200x8"	01.117.180.2008	200,0	8"
225x8"	01.117.180.2258	225,0	8"



Redüksiyon

Reducer Spigot



PE 100

SDR 11 / S 5

PN 16

d1-d2 mm	parça kodu item code	l mm	l1 mm	l2 mm	s1 mm	s2 mm	ağırlık weight kg
25-20	01.117.080.0026	120,0	54,0	52,0	3,0	3,0	0,022
32-25	01.117.080.0033	130,0	57,0	52,0	3,7	3,0	0,025
40-32	01.117.080.0041	130,0	57,0	53,0	3,7	3,0	0,048
40-25	01.117.080.0042	130,0	57,0	53,0	3,7	3,0	0,043
50-40	01.117.080.0051	140,0	63,0	57,0	4,6	3,7	0,079
50-32	01.117.080.0052	140,0	63,0	53,0	4,6	3,0	0,067
50-25	01.117.080.0053	140,0	63,0	52,0	4,6	3,0	0,065
63-50	01.117.080.0064	150,0	65,0	63,0	5,8	4,6	0,132
63-40	01.117.080.0065	150,0	65,0	57,0	5,8	3,7	0,119
63-32	01.117.080.0066	150,0	65,0	53,0	5,8	3,0	0,110
63-25	01.117.080.0067	150,0	65,0	52,0	5,8	3,0	0,105
75-63	01.117.080.0076	170,0	72,0	65,0	6,8	5,8	0,222
75-50	01.117.080.0077	170,0	72,0	63,0	6,8	4,6	0,190
75-40	01.117.080.0078	170,0	72,0	57,0	6,8	3,7	0,180
75-32	01.117.080.0079	170,0	72,0	53,0	6,8	3,0	0,170
90-75	01.117.080.0091	190,0	81,0	70,0	8,2	6,8	0,361
90-63	01.117.080.0092	190,0	81,0	65,0	8,2	5,8	0,317
90-50	01.117.080.0093	190,0	81,0	63,0	8,2	4,6	0,291
110-90	01.117.080.0111	205,0	86,0	81,0	10,0	8,2	0,557
110-75	01.117.080.0112	205,0	86,0	70,0	10,0	6,8	0,497
110-63	01.117.080.0113	205,0	86,0	65,0	10,0	5,8	0,480
125-110	01.117.080.0126	215,0	92,0	86,0	11,4	10,0	0,810
125-90	01.117.080.0127	215,0	92,0	81,0	11,4	8,2	0,700
125-75	01.117.080.0128	215,0	92,0	70,0	11,4	6,8	0,650
125-63	01.117.080.0129	215,0	92,0	65,0	11,4	5,8	0,580
140-125	01.117.080.0141	225,0	110,0	92,0	12,7	11,4	0,998
140-110	01.117.080.0142	225,0	110,0	86,0	12,7	10,0	0,820
140-90	01.117.080.0143	225,0	110,0	81,0	12,7	8,2	0,690
140-75	01.117.080.0144	225,0	110,0	70,0	12,7	6,8	0,560
160-140	01.117.080.0161	245,0	102,0	96,0	14,6	12,7	1,350
160-125	01.117.080.0162	245,0	102,0	92,0	14,6	11,4	1,300
160-110	01.117.080.0163	245,0	102,0	86,0	14,6	10,0	1,280
160-90	01.117.080.0164	245,0	102,0	81,0	14,6	8,2	1,060
180-160	01.117.080.0181	255,0	107,0	102,0	16,4	14,6	2,100
180-140	01.117.080.0182	255,0	107,0	96,0	16,4	12,7	1,980
180-125	01.117.080.0183	255,0	107,0	92,0	16,4	11,4	1,710
200-180	01.117.080.0201	275,0	120,0	107,0	18,2	16,4	2,980
200-160	01.117.080.0202	275,0	120,0	102,0	18,2	14,6	2,640
200-140	01.117.080.0203	275,0	120,0	96,0	18,2	12,7	2,400
225-200	01.117.080.0226	285,0	128,0	120,0	20,5	18,2	3,750
225-180	01.117.080.0227	285,0	128,0	107,0	20,5	16,4	2,980
225-160	01.117.080.0228	285,0	128,0	102,0	20,5	14,6	2,580
225-110	01.117.080.0231	285,0	128,0	86,0	20,5	10,0	2,000
250-225	01.117.080.0251	314,0	155,0	128,0	22,7	20,5	5,100
250-200	01.117.080.0252	314,0	155,0	120,0	22,7	18,2	4,200
250-180	01.117.080.0253	314,0	155,0	107,0	22,7	16,4	3,750
250-160	01.117.080.0254	314,0	155,0	102,0	22,7	14,6	2,980
280-250	01.117.080.0281	335,0	165,0	155,0	25,4	22,7	6,850
280-225	01.117.080.0282	335,0	165,0	128,0	25,4	20,5	6,020
280-200	01.117.080.0283	335,0	165,0	120,0	25,4	18,2	5,850
280-180	01.117.080.0284	335,0	165,0	107,0	25,4	16,4	5,200
315-280	01.117.080.0316	375,0	170,0	165,0	28,6	25,4	8,800
315-250	01.117.080.0317	375,0	170,0	155,0	28,6	22,7	8,100
315-225	01.117.080.0318	375,0	170,0	128,0	28,6	20,5	7,800
355-315	01.117.080.0356	390,0	175,0	170,0	32,2	28,6	9,900
355-280	01.117.080.0357	390,0	175,0	165,0	32,2	25,4	9,500
400-355	01.117.080.0401	415,0	180,0	175,0	36,3	32,2	11,600
400-315	01.117.080.0402	415,0	180,0	170,0	36,3	28,6	11,100

ÜRETİM DEĞERLERİ KARŞILAŞTIRMALARI / COMPARISON OF PRODUCTION NORMS

İçme suyu ve gaz nakli PE Fittingleri ile ilgili EN 12201-3 (revizyon) ve EN 1555-3 (Aralık 2004) Avrupa ürün standartları ile NTG Plastik üretim değerleri karşılaştırması.

Comparison of NTG PLASTİK production norms with EN 12201-3 (revised) and EN 1555-3 (December 2004) standards for gas and water transmission fittings.

Anma Çapı Nominal Diameter	Eritme ucunun ortalama dış çapı Average outer diameter for the fusion end				Yuvarlaklıktan sapma Deviation from roundness		En küçük delik çapı Minimum hole diameter	Geçme uzunluğu Interpassing length	Boru kısmının uzunluğu The length of the pipe side
	D1, en az	D1, en fazla Derece A	D1, en fazla Derece B		En fazla				
			EN STAND	NTG DEĞERİ NTG VALUE	EN STAND	NTG DEĞERİ NTG VALUE			
16	16	-	16.3	16.2	0.3	0.2	9	25	41
20	20	-	20.3	20.2	0.3	0.2	13	25	41
25	25	-	25.3	25.2	0.4	0.3	18	25	41
32	32	-	32.3	32.2	0.5	0.4	25	25	44
40	40	-	40.4	40.3	0.6	0.4	31	25	49
50	50	-	50.4	50.3	0.8	0.6	39	25	55
63	63	-	63.4	63.3	0.9	0.6	49	25	63
75	75	-	75.5	75.4	1.2	0.8	59	25	70
90	90	-	90.6	90.4	1.4	1.0	71	28	79
110	110	-	110.7	110.5	1.7	1.2	87	32	82
125	125	-	125.8	125.6	1.9	1.3	99	35	87
140	140	-	140.9	140.6	2.1	1.5	111	38	92
160	160	-	161.0	160.7	2.4	1.7	127	42	98
180	180	-	181.1	180.8	2.7	1.9	143	46	105
200	200	-	201.2	200.8	3.0	2.1	159	50	112
225	225	-	226.4	226.0	3.4	2.4	179	55	120
250	250	-	251.5	251.1	3.8	2.7	199	60	129
280	280	282.6	281.7	281.2	4.2	2.9	223	75	139
315	315	317.9	316.9	316.3	4.8	3.4	251	75	150
355	355	358.2	357.2	356.5	5.4	3.8	283	75	164
400	400	403.6	402.4	401.7	6.0	4.2	319	75	179
450	450	454.1	452.7	451.9	6.8	4.8	359	100	195
500	500	504.5	503.0	502.1	7.5	5.3	399	100	212
560	560	565.0	563.4	562.4	8.4	5.9	447	100	235
630	630	635.7	633.8	632.7	9.5	6.7	503	100	255

Açıklama / Description

D₁ Kaynak yapılan ucun ortalama dış çapı olup; bu çap deney parçası giriş düzlemi, L₂'den daha büyük olmayan herhangi paralel düzlem üzerinden ölçülür.

The average outer diameter of the welding area.

D₂ Ekleme parçası gövdesi boyunca akış kanalının en küçük delik çapıdır.

The smallest hole diameter of the fitting throughout the body.

E Ekleme parçası gövdesinin herhangi bir noktasında ölçülen et kalınlığıdır.

The wall thickness at any point of the fitting.

E₁ Sonu ucunun giriş kısmından en fazla L₁ mesafesinde, eriyen kısmın herhangi bir noktasında ölçülen et kalınlığıdır.

The wall thickness of the fitting at any point of the fusion area.

L₁ Boru ucunun eriyen kısmına ait içte kalan geçme uzunluğu olup; bu uzunluk alın kaynağı için gerekli boru ucunun başlangıçtaki derinliğine eşittir.

The length of the interpassing area inside the fitting.

L₂ Boru ucunun eriyen kısmına ait dışta kalan borsal kısmının uzunluğu olup; eriyen kısmın başlangıçtaki uzunluğudur.

The length of the interpassing area outside the fitting.

